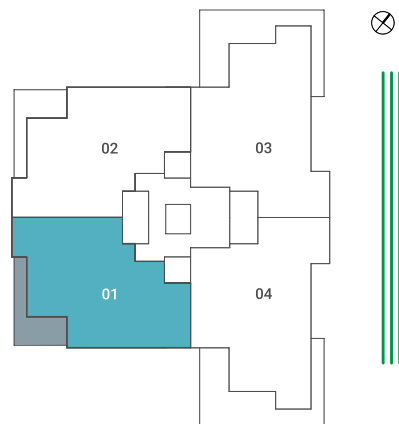
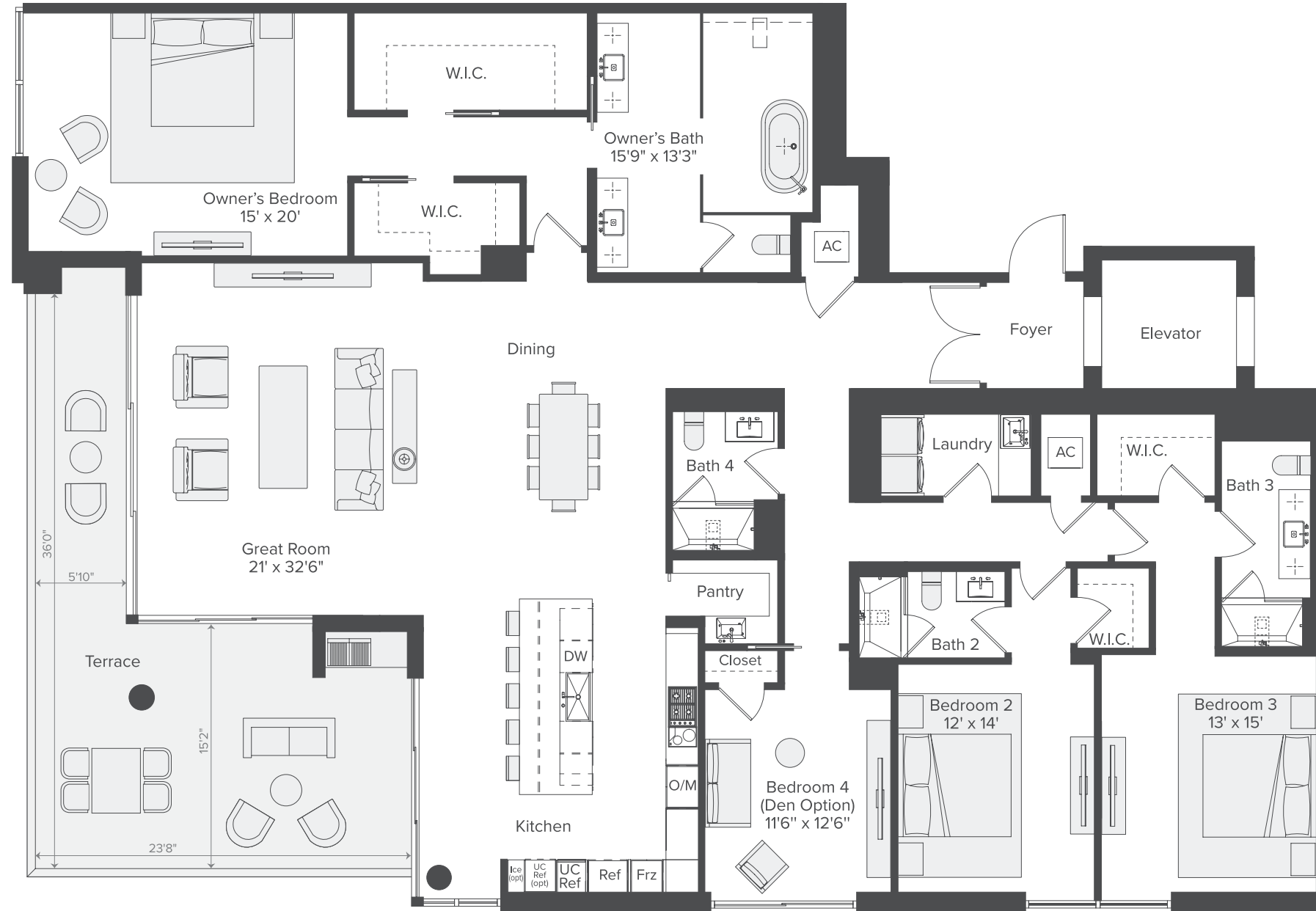


# RESIDENCE 01 LEVELS 7-23

4 BEDROOMS | 4 BATHROOMS

Interior	3,215 SQ FT
Terraces	500 SQ FT
Storage	35 SQ FT
Total Living Area	3,750 SQ FT



ORAL REPRESENTATIONS CANNOT BE RELIED UPON AS CORRECTLY STATING REPRESENTATIONS OF THE DEVELOPER. FOR CORRECT REPRESENTATIONS, MAKE REFERENCE TO THE DOCUMENTS REQUIRED BY SECTION 718.503, FLORIDA STATUTES, TO BE FURNISHED BY A DEVELOPER TO A BUYER OR LESSEE. All artist's renderings are proposed concepts shown only for marketing purposes and are based upon current development plans, which are subject to change by the developer, West Bay Hill, LLC, which reserves the right to make changes at its sole discretion, without prior notice or approval of purchaser. This project has been filed in the state of Florida and no other state. This is not an offer to sell or solicitation of offers to buy the condominium units in states where such offer or solicitation cannot be made. These plans do not constitute an offer where prior registration or other qualification is required. Prices, availability, plans, features, dimensions, specifications, and amenities are subject to change at any time without notice. All Rights Reserved, Equal Housing Opportunity. There are various methods for calculating the total square footage of a condominium unit and depending on the method of calculation, the quoted square footage may vary by more than a nominal amount. The dimensions stated in this brochure are measured to the exterior boundaries of the exterior walls and the centerline of interior demising walls and, in face, are larger than the dimensions of the "Unit" as defined in the Declaration of Condominium for The Island Condominium at West Bay Club, which are measured using interior measurements. All dimensions are approximate and all floor plans and development plans are subject to change.